

# Use and provision of day centres over time in England: Triangulation, trends and predictors (2005-2022)

British Society for Gerontology – Annual Conference 2022 (UWE)  
*Oral presentation (July 7<sup>th</sup> 2022)*

---

Demi Patsios (presenter), Ailsa Cameron, Laura Bennett, Jo Thorn, Karen West, Paul Willis (UoB), Ruth Green & Simon Hankin (BS3 Community), Sonia Davies (BCC), Age UK.

# Background/overview

## ■ **What this presentation covers**

- Summary of quantitative component/findings from secondary analysis of data sources carried out as part of the NIHR SSCR-funded project *“Reimagining collective forms of day care provision for older people”*

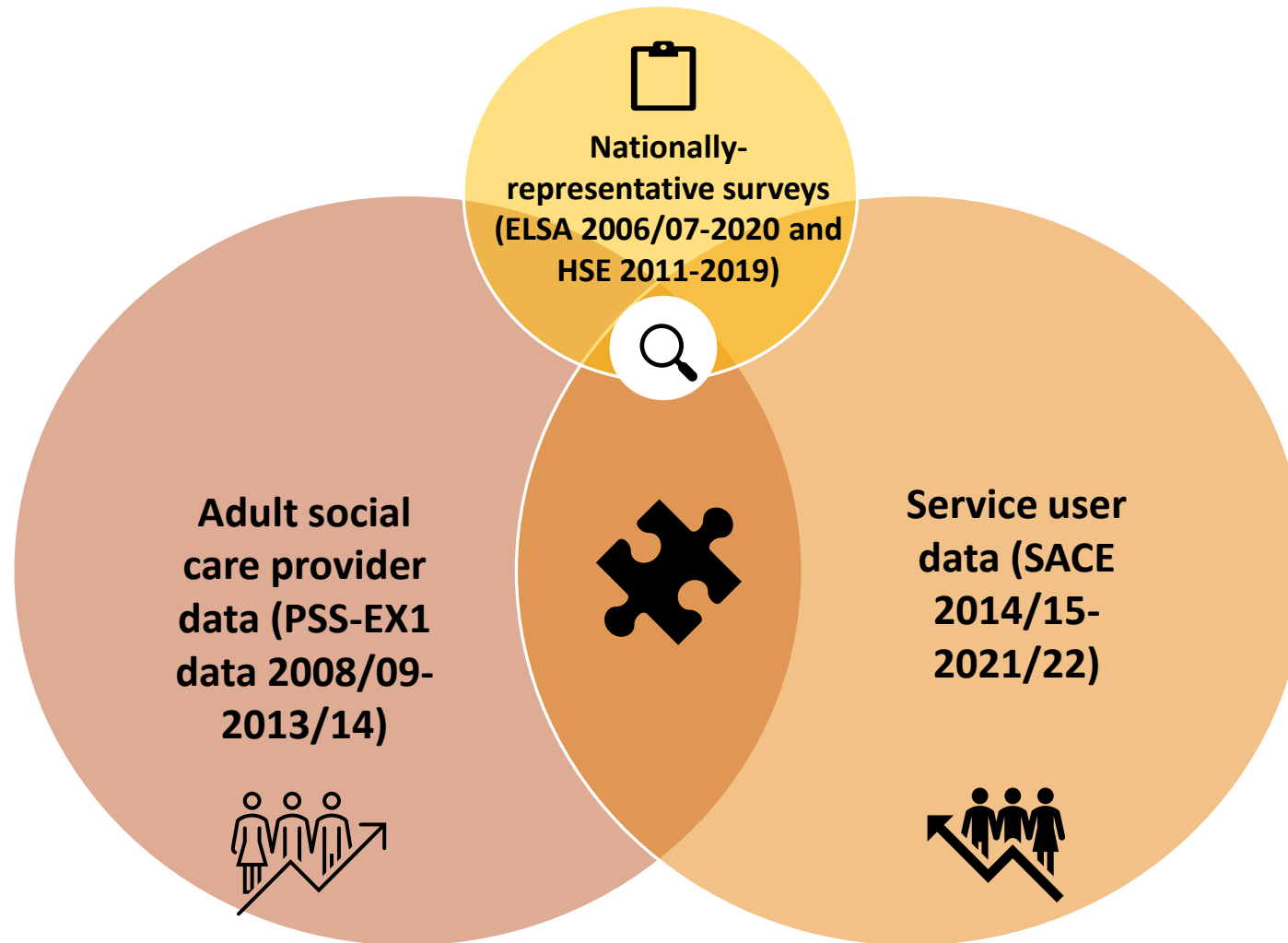
## ■ **Policy/practice context**

- Impact of austerity/Covid-19
- Influential body of work – ASCOT and ASCOF

## ■ **Sources of data on adult social care in England**

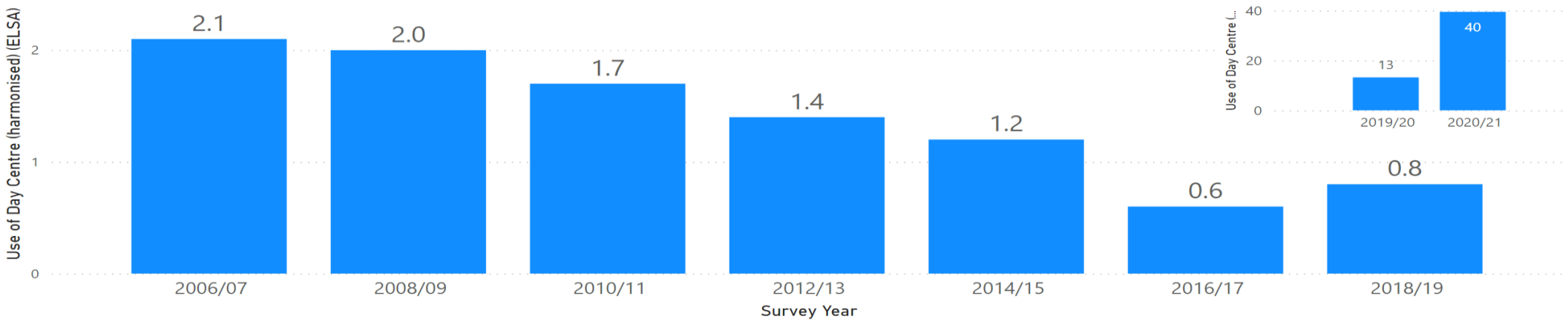
- Local authority administrative data collated and published by NHS Digital
- Through nationally defined surveys which are administered by the CASSR
- Data from other nationally-representative surveys of the population/subgroups (ELSA, HSE)

# NIHR SSCR project: Triangulation of data on day centres/services

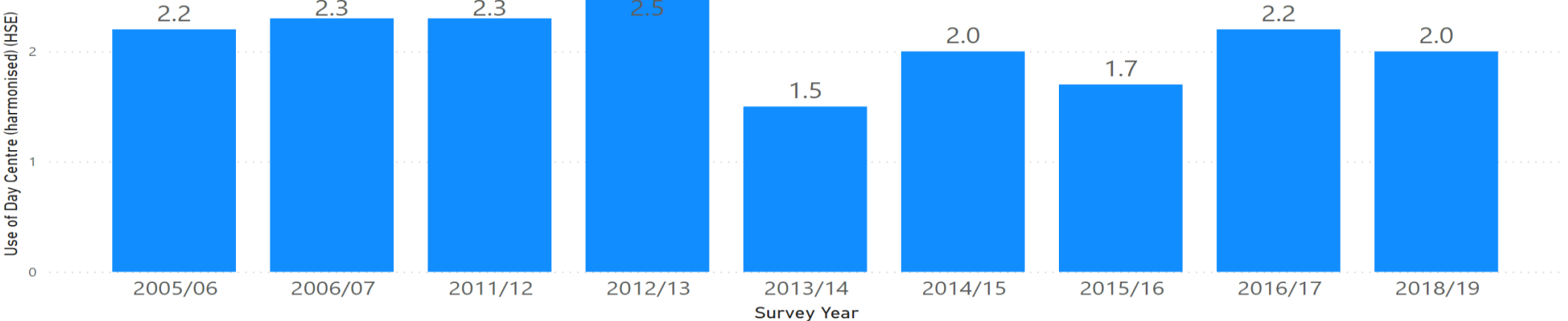


# Use of day centres in two nationally representative surveys in England: English Longitudinal Study on Ageing (ELSA) and Health Survey for England (HSE) - Percentage change over time (adults 65+)

Use of Day Centre (harmonised) (ELSA) by Survey Year



Use of Day Centre (harmonised) (HSE) by Survey Year

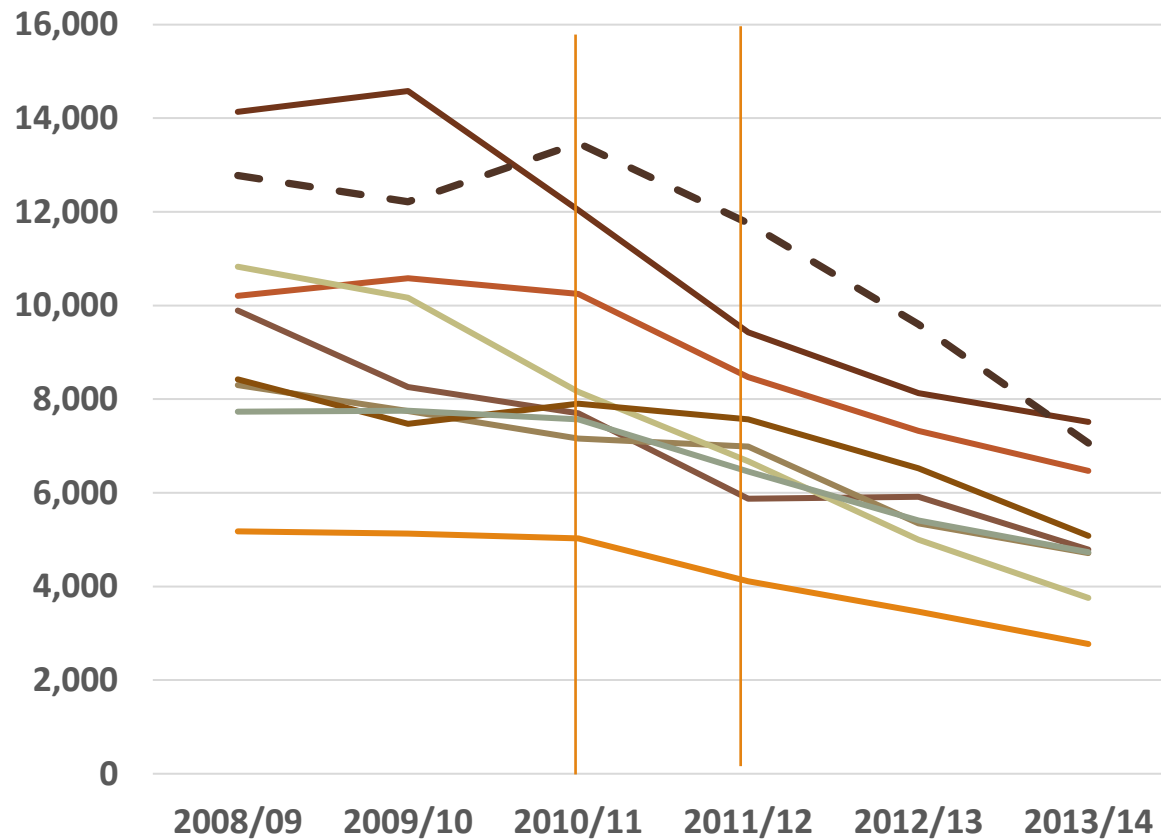


## Use of day centres in two nationally representative surveys in England: Heatmap of key influencers/predictors - pooled ELSA/HSE survey data

Key influencers reference group (increase use of day centres/services by X times)	ELSA (n=7 surveys)	HSE (n=9 surveys)	Average (unweighted)
Not married/cohabiting	5.25	2.87	4.06
85+	4.60	3.07	3.84
Has Long-standing limiting illness (LLSI)	3.88	2.46	3.17
Rents/rent free (tenure)	3.66	2.15	2.91
Poor self-rated health	3.04	2.34	2.69
O-Level/equivalent or below qualification	3.43	1.95	2.69
Ethnic minority group	1.80	3.46	2.63
Female	2.17	1.63	1.90
Survey year (ELSA <=2010/11, HSE <= 2012)	2.46	1.31	1.89
*Routine/manual occupation (NS-SEC3)	large n miss	1.74	1.74
*Bottom income quintile	1.92	large n miss	1.92
*Car/van not available	large n miss	large n miss	n/a
*Public transport use (ELSA) / rating (HSE)	large n miss	large n miss	n/a
*Has mobility difficulty	large n miss	large n miss	n/a
*Has I/ADL difficulty	large n miss	large n miss	n/a
*Has informal care/support	large n miss	large n miss	n/a
*Poor mental health (GHQ-12)	large n miss	large n miss	n/a
<b>Total sample 65+ using day centre services (=N)</b>	<b>372</b>	<b>420</b>	<b>792</b>
<b>Total sample 65+ providing valid info (=N)</b>	<b>32,746</b>	<b>21,761</b>	<b>54,507</b>

## Personal Social Services: Expenditure and Unit Costs returns (PSS-EX1):

Absolute and relative change in the number of day care or day services clients per week on average during the year - clients aged 65 and over (LA's own provision + provision by others), by government office region

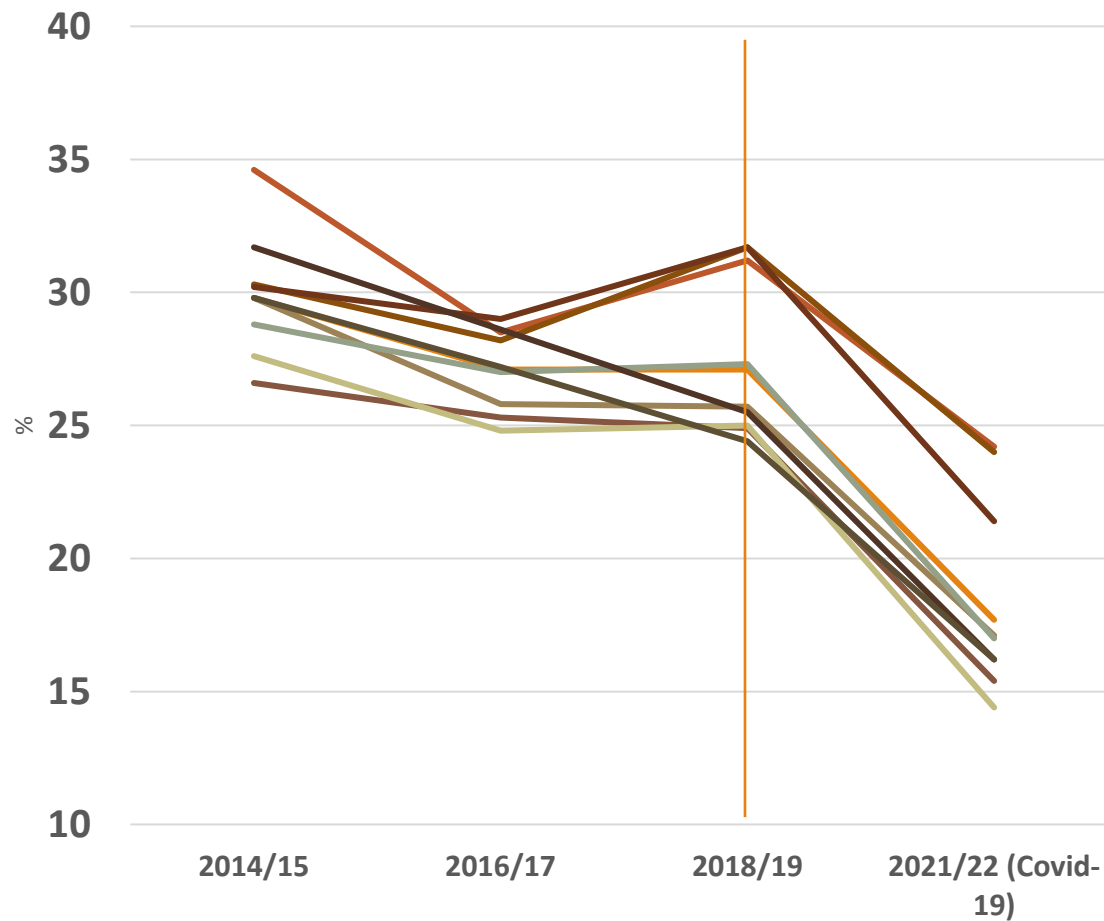


- North East
- North West
- Yorkshire and the Humber
- East Midlands
- West Midlands
- East
- London
- - South East
- South West

	<u>% Avg</u> <u>Diff</u> <u>(2008/09-</u> <u>2010/11)</u>	<u>% Avg</u> <u>Diff</u> <u>(2011/12-</u> <u>2013/14)</u>
England	-8.9	-17.1
North East	-1.5	-17.9
North West	0.3	-12.6
Yorkshire and the Humber	-11.7	-9.2
East Midlands	-7.1	-17.7
West Midlands	-13	-25
East	-2.8	-17.9
London	-7.1	-10.7
South East	2.9	-22.4
South West	-1.1	-14.4

## Personal Social Services Survey of Adult Carers in England (PSS SACE):

Line chart and heatmap of relative change in... Has the person you care for used any of the support or services listed, in the last 12 months?" - Day centre or day activities, by government office region

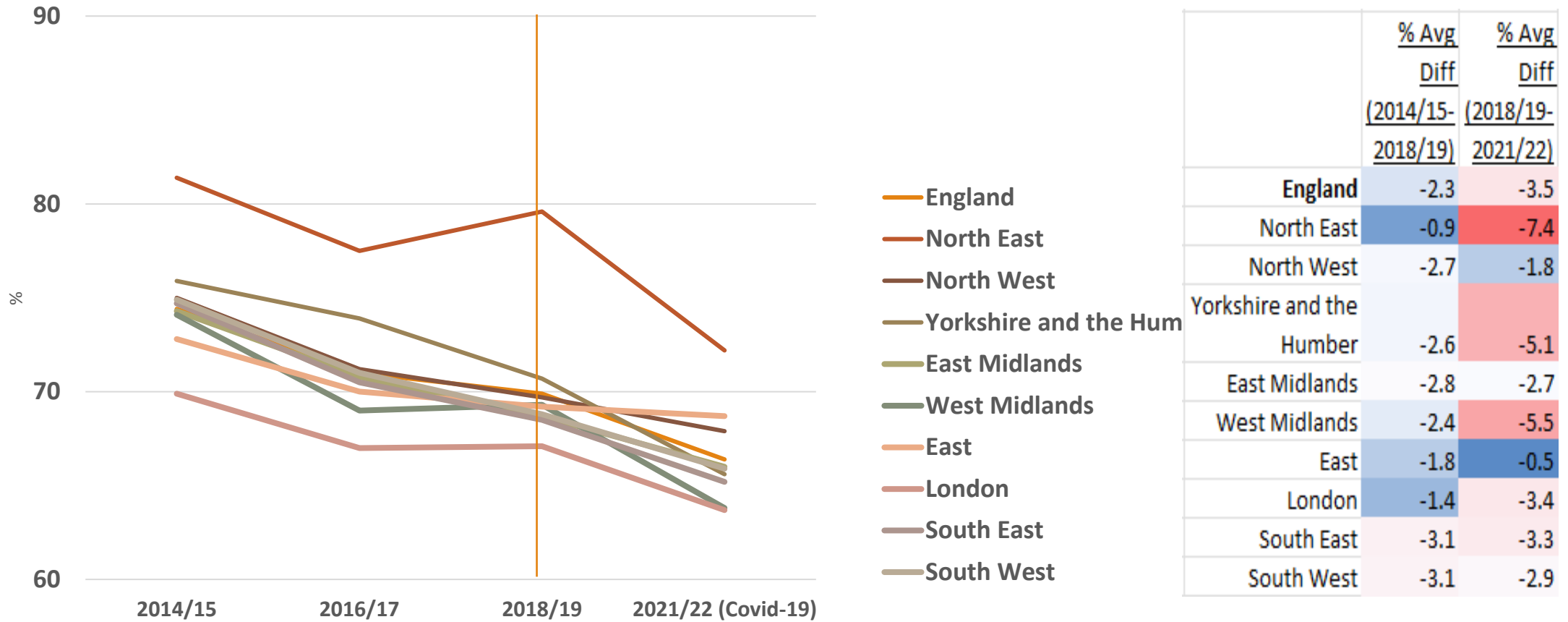


- England
- North East
- North West
- Yorkshire and the Humber
- East Midlands
- West Midlands
- East
- London
- South East
- South West

	<u>% Avg</u> <u>Diff</u> <u>(2014/15-</u> <u>2018/19)</u>	<u>% Avg</u> <u>Diff</u> <u>(2018/19-</u> <u>2021/22)</u>
England	-1.4	-9.4
North East	-3.4	-7.0
North West	-1.7	-9.5
Yorkshire and the Humber	-4.1	-8.6
East Midlands	-2.6	-10.6
West Midlands	-1.5	-10.3
East	1.4	-7.7
London	1.5	-10.3
South East	-6.2	-9.3
South West	-5.4	-8.2

## Personal Social Services Survey of Adult Carers in England (PSS SACE)

Line chart and heatmap of relative change in... Satisfaction with services cared for person has used (combined 'extremely', 'very', 'quite' satisfied), by government office region





## Key takeaways from the triangulation/analysis of data on day centres/activities in England (2005-2022)

- Gradual downward trend in the provision and use of day centre services/activities by adults/clients aged 65+ in England
- Council-provided data is vital but changes to reporting have made comparing changes over time difficult
- Other nationally-representative surveys (ELSA, HSE) offer some advantages, but are limited due to sample size
- Provision and use during Covid-19 remains unclear
- Unclear evidence base for policy/practice?

# Disclaimer and further information

*These presentations report on independent research funded by the NIHR School for Social Care Research. The views expressed in these presentations are those of the research team and not necessarily those of the NIHR School for Social Care Research or the Department of Health/NIHR.*



*For further information on this presentation, please contact Dr Demi Patsios, School for Policy Studies, University of Bristol, email: [demi.patsios@bristol.ac.uk](mailto:demi.patsios@bristol.ac.uk)*